

# Transport Planning

## Council Briefing

Wednesday 18 September 2024

# Contents

---



- Context
- PNITI project overview
- PNITI triggers and dependencies
- Ongoing transport planning projects
- NZTA/PNCC alignment workshop
- NZTA Future works
- PNCC future transport planning projects
- MRFRR funding options
- Parking Framework

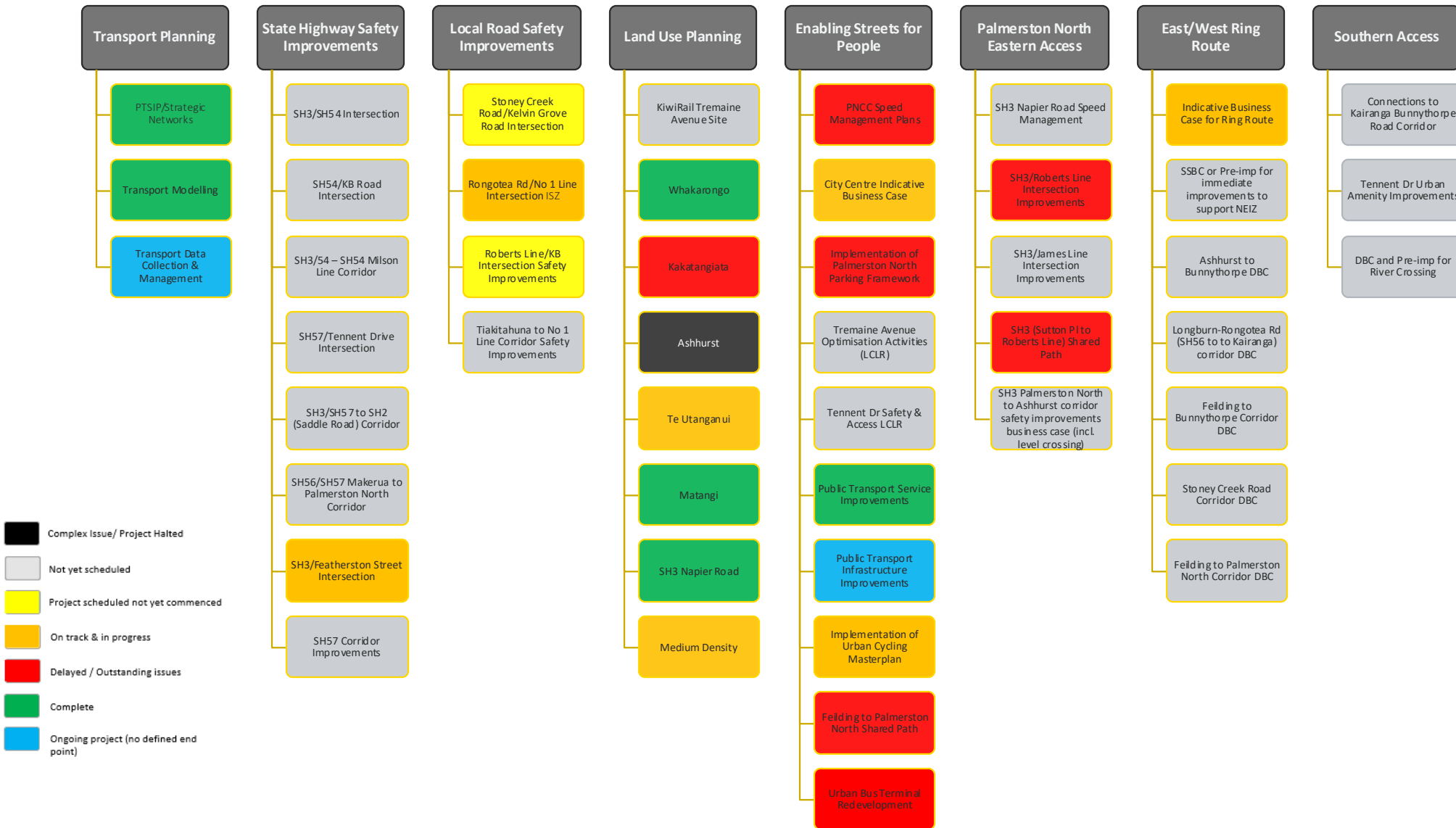
# Context

---



- NLTP allocations was released 3 September
- Roads of National significance have consumed a very large majority of NZTA funding
- Total LTP budgets assumed to be co-funded were \$129.6M. Our confirmed NLTP allocation was \$56.2M
- PNCC co-funding is severely limited to road maintenance and operations
- Walking and Cycling programmes received 22% of the requested funds (mostly maintenance)
- Ring Road business case was identified for 'possible' co-funding (not funded unless money becomes available).
- No co-funding for Aokautere or Bus Hub Business Cases
- No co-funding for Council's Low-Cost Low-Risk programme (only 17 councils nationally got funding in this category)
- No co-funding for Council Capital New programme (except Amberly Ave)
- Co-funding allocation for councils fairly consistent nationally
- Officers working through implications of NLTP on activities at programme and project level

# PNITI project overview



# PNITI triggers and dependencies

---



- Kiwirail freight hub / Te Utanganui key connection to the programme
- Te Ahu a Turanga trigger for various safety improvements and business cases
- Growth areas need to consider SH interactions
- ‘Enabling streets for people’ package planning completed prior to Ring Road DBC’s
- Palmy Transport System Improvement Programme required for ‘Enabling streets for people’ projects and business cases (Complete)
- Transport Model update required for Business Cases (Complete)

# Current transport planning projects



- Urban Cycle Masterplan Network Masterplan Business Case/operational update
- City Centre Indicative Business Case
- Updated Traffic model – recently complete
- Parking Framework
- Scoping Manawatū Regional Freight Ring Road (MRFRR) Indicative Business Case and developing procurement documents

# PNCC/ NZTA alignment workshop

- 23 August PNCC and NZTA officers met to discuss PNITI and align different projects with the programme.
- Included representatives from a range of NZTA teams
- Developed a list of short-term projects to focus on to support the delivery of PNITI and MRFRR.
- Undertaken prior to NLTP, some projects will likely need to be pushed out to medium-term planning.
- Agreement between PNCC and NZTA that this should be conducted regularly to continue aligning projects into the future.
- Prioritised short-term projects to support delivery of PNITI and the MRFRR



# NZTA Works

Subject to confirmation of NLTP funding impacts



SH 3 & SH 57 Renewals



Safety Improvements  
to SH3/SH54  
Intersection



Safety Improvements  
to SH54/Milson Line  
Intersection



# PNCC future transport planning projects



- MRFRR Indicative Business Case development
- **Bus Hub Detailed Business Case planning/procurement/development (not funded)**
- Complete Parking Framework
- Parking Management Plans
- Speed Management Planning - scope to be confirmed by new Speed Management Rule and Council direction
- **Aokautere Business Case (PCG interaction with SH57) - not funded**

# Manawatu Regional Freight Ring Road funding options



## Business Cases:

- Indicative Business Case – potential to pool Council share of unfunded business cases and complete without NZTA co-funding

## Construction:

- Crown Funding (NLTF)
- Toll
- IFF / Targeted Rates
- Private equity / BOOT (build, own, operate, transfer)
- City Deal – will link to other funding tools
- Value Capture

# Parking Framework



- Part of the PNITI programme ‘Enabling Streets for People’ package
- Strategic document designed to inform the council’s decision-making around parking
- Sets out the council’s priorities in managing parking management conflicts (i.e. short stay versus long stay)
- Help inform the council of priorities for investing in parking infrastructure (i.e. sensor and pay by plate)
- Application of the parking framework is done through parking management plans (to follow the parking framework).
- Draft prepared – distributed with slides for feedback and to discuss next steps
- Options:
  - 1) Stop work and develop internal guidance to inform more detailed parking management plans
  - 2) Review and amend draft
  - 3) Proceed to consultation

**Any Questions?**