

He rā ki tua – Horizons Region Spaces and Places Plan for Sport and Recreation 2023-2043

Briefing to Elected Members – 5 June 2024

Ann-Marie Mori – Policy Analyst, PNCC

Kelly Shanks – Chief Executive, Sport Manawatū

Zanta Jones – Spaces and Places Consultant, Sport New Zealand Ihi Aotearoa

Briefing

1. Introduction
2. Background
 - Council's investment into sports facility planning
3. He rā ki tua – Horizons Region spaces and places plan for sport and recreation
4. Updated planning approach
 - Costs and benefits
5. Actions for PNCC
6. Actions for the Region
7. Summary
8. Questions



He rā ki tua

Horizons Region Spaces and Places Plan

1. Introduction

Understanding roles:

Sport NZ Ihi Aotearoa

- Provides national guidance: sporting facilities lifecycle – best practice approach
- Invests in regional and facility plan development & ‘spaces and places’ roles in Regional Sports Trusts



Regional Sports Trust: Sport Manawatū

- Led Plan development with consultant support (RSL), iwi partners and stakeholders
- Key implementers

Councils

- Steering and working group members, subject matter experts (staff) & decision-makers (EMs)

1. Introduction cont.



- Shortly staff will be seeking PNCC's endorsement of He rā ki tua to guide planning for spaces and places (facilities) in the City and region
- Over the last 5 years we have used the Manawatū-Whanganui Sports Facility Plan (2018) to guide facility planning and decisions
- He rā ki tua is the new, updated plan (replacing the RSFP) and recommends that:
Organisations endorse this plan and integrate the decision-making framework into decisions about play, active recreation and sports facilities.
- Council's endorsement of the Plan, and the planning approach will be sought at the Culture and Sport Committee on 27 June 2024

2. Background

The RSFP process has been used to support proponent-led proposals

Council has contributed about \$120,000 over the last 5 years for facility assessments (for all but the gymsports proposal)



Covered tennis and netball courts – Netball Manawatū and Manawatu Lawn Tennis Club



Artificial football turf – Central Football



Bowls Arena – Bowls Manawatu



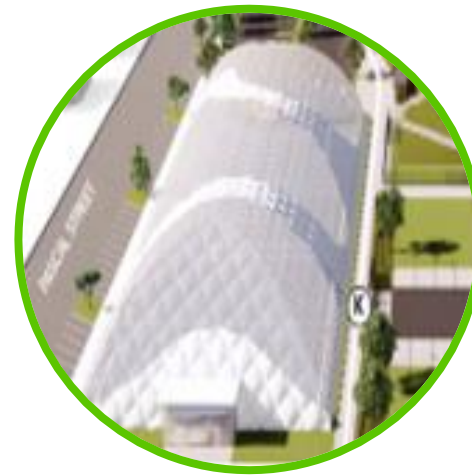
Regional gymnastics facility – Manawatū GymSports Inc

2. Background cont.

The RSFP process has also been used for these Council-led projects



Redevelopment of the sportsfields at CETA



Multi-purpose facility



Pool provision (e.g. a new 25/50 metre swimming pool)

3. He rā ki tua – Horizons region spaces and places plan

...better times ahead through stronger collaboration

VISION

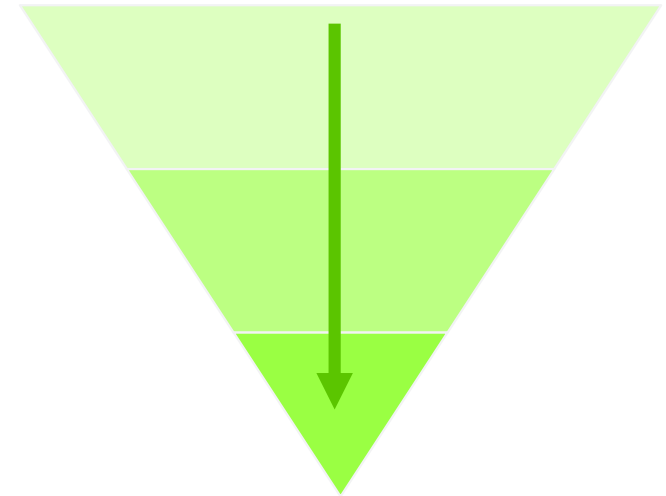
Spaces and places in the Horizons region enable and inspire people to participate in play, active recreation, and sport, their way.

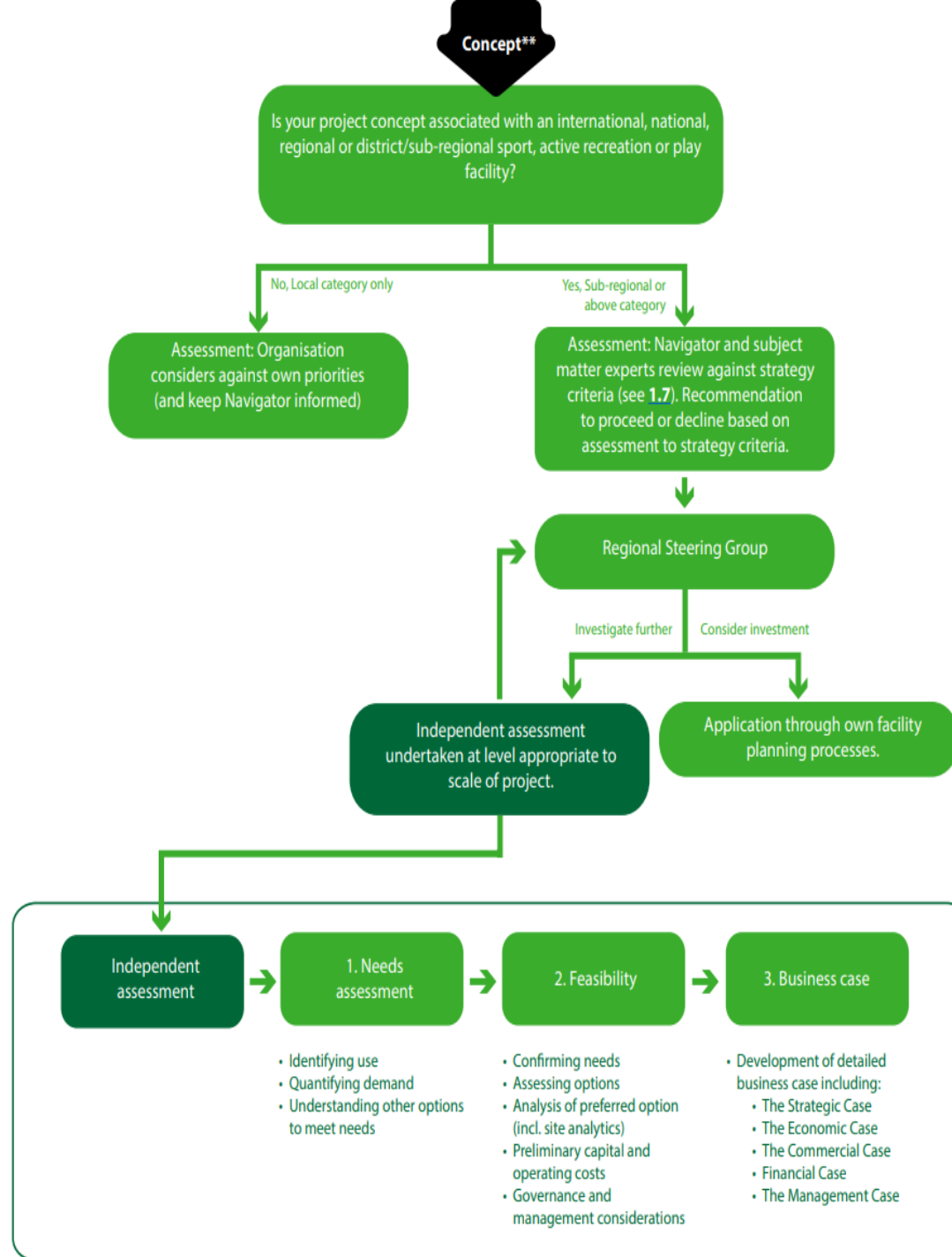
- Identifies issues and opportunities
- Includes and responds to community and sector views
- Establishes key planning principles:
 - Honour Te Titiri o Waitangi | A people-centred approach | A network approach to future planning | Shared use of spaces and places | Ensuring equitable spaces and places | Factoring in the sustainability of spaces and places
- Refreshes the planning approach from 2018
- Makes Council-specific and regional recommendations

4. Updated planning approach

This helps everyone to make informed decisions

- Simplified approach but similar to 2018 RSFP investment decision-making process
- New Steering groups: Horizons North & Horizons South
- Defined roles and responsibilities: Sport Manawatū, PNCC, partners, funders





4. Updated planning approach cont.

— Costs and benefits of the planning approach

Assessments provide supporting evidence for whether or not to support progression of facility ideas

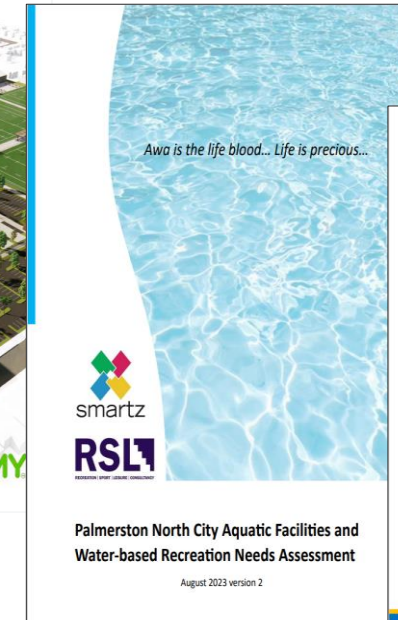
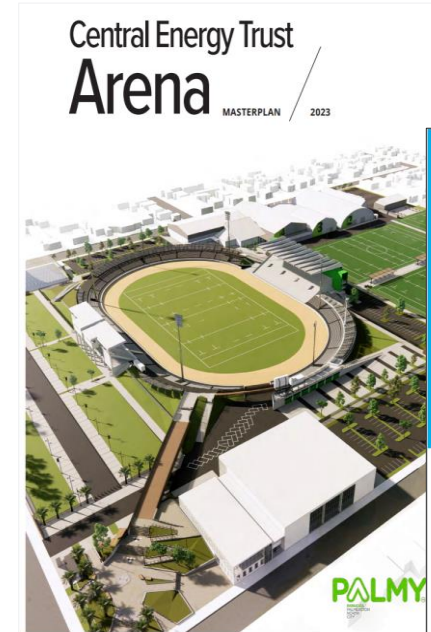
Costs	Benefits
Independent assessments have a cost to the facility proponent/champion (or Council)	Provides consistency for planning and decision-making across the region – concepts are tested against the Plan’s principles
The pace of moving through the process depends on when funding for assessments is available	Informs LTP processes e.g. level of contribution towards facility development
The cost of preparing assessments is small (<1%) compared to the cost of the facility being planned for	Process can be scaled depending on facility type and estimated facility cost
	Inclusion of projects in the Plan and any related assessments support funding applications
	Can help to prioritise facility development

5. Actions for PNCC

We have already made good progress with the identified actions in the Plan

Progress with the implementation of recommendations:

- CETA Masterplan
- Aquatic facilities needs assessment
- Covered bowls facility
- Artificial multi-code and football turfs (Massey, CETA)
- Indoor courts study (underway)
- + various other projects



Actions inform future direction through Play and Recreation Plan, Asset Management Plan

6. Regional recommendations

Fosters a collaborative approach by having common enabling and process recommendations

- Enabling recommendations:
 - Increase awareness of spaces and places
 - Guide spaces and places developments
 - Focus on accessibility
 - Consider informal play and recreation alongside any facility development

- Process recommendations:
 - Establish Te Paewhenua ki te Tonga - Horizons South Steering Group, including Iwi, councils, Sport Manawatū and community funders to oversee concepts and can look for collaborative opportunities and connections with other projects
 - Coordination of the Steering Groups is overseen by Sport Manawatū
 - Review the Plan in 3-4 years' time, with a focus on across-boundary collaboration

7. Summary



- **He ra ki tua** is a planning framework that builds on the Manawatū-Whanganui Regional Sport Facility Plan 2018

- It provides a platform for:
 - Greater regional collaboration
 - A collaborative view of the priorities across the region
 - Informing planning for future facilities
 - Informing LTP processes – identified initiatives or projects for investment
 - Ensuring investment decisions are evidence-based

- It complements, supports and informs detailed planning undertaken at a local level

- Council’s endorsement of the Plan, and the planning approach, to guide our own planning will be sought at the Culture and Sport Committee on 27 June 2024

Questions



PAPAIOEA
PALMERSTON
NORTH
CITY

