

ENROL STAND VOTE

Supporting your community in the 2025
Palmerston North City Council election



PAPAIOEA
PALMERSTON
NORTH
CITY



VOTE FOR PALMY

LOCAL ELECTIONS
2025



The 2025 Local Election is fast approaching!
You can vote from **9 September to 11 October 2025.**

If you're enrolled, you will be able to vote for the mayor and councillors who best represent you.

Every day, Council makes decisions that affect your life – from the services you rely on (like safe drinking water, footpaths and roads), to how Palmy grows and what our city will look like in 30 years' time.

It's important that everyone who can vote and wants to, has the chance to do so. This simple guide will help you to empower your community to enrol, stand and vote.

How can I support my community?

Engaging with your community about the election makes a big difference!

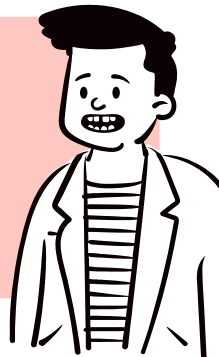
Research shows that for each voting-related interaction a person has, their likelihood of voting increases by 11%. You can help your community by encouraging them to enrol, stand, and understand the voting process.

Here are some fun ideas to get you started:

- Talk to your community about issues they are passionate about and the power of their vote.
- Include enrolment and voting reminders in your newsletters and communications.
- Post on social media (share stories about why you or other community members are voting).
- Consider how to support people in your community with additional accessibility needs on how to enrol.
- Remind people their vote has power and could be the decider between a candidate that represents them and one that does not.
- Run fun and friendly events e.g. Pizza Enrolment parties where everyone who shows up to enrol gets to share in kai and kōrero about the upcoming elections.
- Take a buddy with you when posting your ballot and treat yourself to something from a local business to celebrate on the way home.
- Want help with engagements? Contact elections@pncc.govt.nz
- Pop posters up on notice boards (attached).

Get to know the candidates:

- Encourage passionate members of your community to stand as a candidate.
- Info for candidates will be available from May. Info about candidates will be available from August.
- Host a 'meet the candidate' session or debate.



Key election dates

Important dates throughout the 2025 Local Election period

ENROL

Wednesday 18 June

Last day to enrol to receive voting papers by mail.

Otherwise, you'll need to cast a special vote.

After this you can still enrol or update your details BUT you will need to come and cast your vote in person at our libraries or Customer Service Centre.

RESULTS

Saturday 11 October

Preliminary results out.

Friday 17 October

Final results out.

STAND

Friday 4 July

Candidate nominations open.

Friday 1 August

Nominations close at midday.

VOTE

Tuesday 9 September

Voting documents posted out.

Saturday 11 October

Voting closes at midday.



How do I enrol to vote?

Voting is one of the best ways to have your say about what goes on in Palmy. There are loads of ways to enrol and you can always ask for support if you need it.

TO ENROL

Visit: **vote.nz**

Email: **enrol@vote.nz**

Call: **0800 36 76 56**

Freetext: Your name and address to **3676** to enrol to vote or to update your enrolment details.

Enrolment information is available in 27 languages.

You can find it here:

vote.nz/enrolment-information-in-multiple-languages

You can enrol if you:

- Are 18 years or older
- An NZ citizen OR you have lived in Aotearoa for more than one year and have a visa which allows you to stay in New Zealand indefinitely.

If you're enrolled to vote for the parliamentary elections and your address is up to date, then you're automatically enrolled for local elections too.

If you're enrolled, you'll get an enrolment update pack in the mail in early July. If you don't receive an enrolment update pack, you're either not enrolled or you need to update your enrolment details.

When you enrol to vote, you'll need to provide a postal address where electoral mail can be sent. This is ideally where you live, or it could be a place where you spend a lot of your time. It could also be a PO Box, or the address of a friend, family member, church or support group, as long as its someone who will agree to hold your mail for you to collect.

Update your details

It's really important your address is up to date as you will receive your voting papers via post. If you're not sure, now is a great time to check.

vote.nz



CAN I ENROL ON AN UNPUBLISHED ROLL?

Not everyone feels safe enough to have their details publicly available on the electoral roll, but that doesn't mean they lose the right to vote.

If you're concerned about your personal safety, or that of your family, you can apply to go on the confidential unpublished roll.

To apply to go on the unpublished roll, visit **vote.nz**



MĀORI ROLL

If you're Māori, you have the choice to enrol on either the Māori roll or the general roll. If you're on the Māori roll, you will be voting in Palmerston North's Te Pūao Māori Ward. If you're on the general roll, you'll be voting in Te Hirawanui General Ward.

If you're enrolling for the first time, you can choose your roll when you sign up. If you want to change rolls, you'll need to do this by July.

NEED HELP WITH ANYTHING?

If you need help with enrolling or have accessibility needs, the Electoral Commission can help. Get help to enrol visit **Electoral Commission** website.

Information on the Māori ward referendum

Alongside the election, you'll vote in a referendum that decides how Māori representation will work in our community.

WHAT IS THE REFERENDUM ABOUT?

Māori wards were introduced for the 2022 local elections. Under new legislation, you now get to decide whether to:

- Keep or remove **Te Pūao Māori Ward** for Palmerston North City Council.
- Keep or remove **Tonga Māori** and **Raki Māori** constituencies for Horizons Regional Council.

WHO CAN VOTE?

Everyone enrolled to vote can have their say in this referendum – it doesn't matter if you're on the Māori roll or the General roll.

THE RESULT MATTERS

Councils must follow the result of this referendum. The outcome will take effect for the 2028 and 2031 elections. Māori wards and constituencies will remain in place for the 2025-2027 council term.



How to vote

Voting is done by post. If you're enrolled, check your mailbox for your voting forms between 9 and 22 September 2025.

Complete your voting forms and return them:

- to any of our specially marked orange ballot boxes – more information will be available closer to the election on our website.
- to our Customer Service Centre at Te Marae o Hine The Square (during opening hours).
- in the freepost envelope via any blue DX mailbox.
- to any Palmerston North Library – Find your nearest library and its opening hours.



IF YOU NEED HELP FILLING IN YOUR VOTING DOCUMENT

If you have additional accessibility requirements, are unable to read or write or are not familiar with the language on the form, you may need help to vote. You can authorise someone you trust to mark the voting document for you following your instructions. You can also come to our Customer Service Centre at **Te Marae o Hine The Square** or our libraries. You can also vote by phone this year. The contact number is: **0800 922 822** and get help from trained advisors.

SPECIAL VOTING

Sometimes you might need to cast what's called a 'special vote'. You will need to do this if you:

- Didn't receive your voting forms in your letterbox
- Lost or damaged your voting forms
- You enrolled after 18 June 2025 or updated your details after the roll was published
- You are on the unpublished (confidential) electoral roll
- Your enrolled address is out of date, and you have been living at a new address for a month or more.

Casting a special vote is easy. Come see the team at the Customer Service Centre at **Te Marae o Hine The Square** or our libraries on the weekends. It takes less than five minutes to issue a special vote, and you can vote on site or take it away to vote later.

If you can't come in to cast a special vote, then we can send the forms out to you.

Email elections@pncc.govt.nz or call **06 356 8199** and we can help.

SINGLE TRANSFERABLE VOTE (STV) VOTING

Voting for the Palmerston North City Council elections is done via the STV method, where voters rank candidates in order of preference. On your voting paper, put a '1' next to your favourite candidate, '2' next to your second favourite, and so on.

You can rank as many or as few candidates as you wish, just don't skip any numbers. More information on how STV works can be found on our webpage **How we elect our Council**.

Accessible information

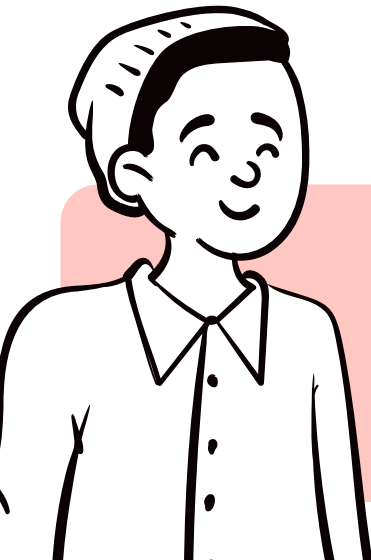
Enrolment information for voters in additional accessible formats.

You can find enrolment information in accessible formats on the **Electoral Commission site**. Formats include New Zealand sign language, audio, large print, and e-text. Info included:

- Are you eligible to enrol and vote?
- General roll or Māori roll
- Can you go on the unpublished roll?
- Enrol from overseas?
- Ways to enrol.

Information is also available on **how to find help to enrol**.

You can also call **Blind Low Vision NZ's Telephone Information Service (TIS)** to find out more about enrolling and voting.



Need more information?

- **Get posters and brochures** for your community.
- Get in touch with the team by emailing elections@pncc.govt.nz

HOW TO VOTE

Voting closes
midday
11 October

Are you enrolled?

Don't know?
Check at vote.nz

YES

NO

You can still vote!

Learn about your candidates

Visit pncc.govt.nz/elections to watch their videos and read their bios

Special vote

Cast a special vote at one of our handy locations – check here for locations and times:
pncc.govt.nz/specialvoting

Time to vote!

Check your mailbox for your voting papers

Rank your candidates

On your voting form you'll need to rank your candidate choices 1, 2, 3, 4... do not put a tick in the box. You can rank as many or as few of the candidates as you like

Learn about your candidates

Māori Wards referendum

On your voting paper for the referendum, vote by answering the referendum question for Palmerston North City and again for Horizons Regional Councils. Place a tick next to 'Yes' or 'No.'

Rank your candidates

Send your vote!

Post your voting papers or drop it off at one of the orange voting bins before midday on Saturday 11 October.

Find out where pncc.govt.nz/orangebins



Te Kaunihera o Papaioea
Palmerston North City Council

pncc.govt.nz / info@pncc.govt.nz / 06 356 8199