



## Featherston Street Placemaking Co-design Outcomes

### **Background**

Paper Road has been engaged by Palmerston North City Council to carry out a placemaking co-design process as part of the Featherston Street Cycleway project. The scope for the placemaking portion of the project is the area from North Street to Aroha St. This area encompasses the two schools (Central Normal and Palmerston North Boys High School) and a variety of businesses. The co-design process included three workshops, two of which were with groups of students from each of the schools that are situated in this stretch of the street. These schools are the basis for a whole community of users who most often use and interact with this stretch of road so these workshops were invaluable insights into what matters to them. A third workshop was held on the 23rd of August with a cross-section of the community, including local businesses, residents, Rangitane, school staff and students. Below is an outline of the ideas and feedback we received. This information will directly inform the placemaking plan and features for this area.

### **Workshop 1 - Palmerston North Boys 23rd August 2pm-3pm**

**Present:** 13 boys high school representatives, 2 Paper Road Facilitators

#### **Workshop content:**

Ellen Young and Emma Morris from Paper Road took the students through a short presentation outlining the project objectives and parameters. There were a few informal questions asked of the group about their interests and experience of the street. Then the facilitators and group of students went for a walk around the school and identified spaces that could be improved. Ideas and comments were recorded. A short activity at the end was carried out which gained insight into the student's priorities.



### Where do boys hang out before/after school?

- Grass by Mitre 10 – “ A lot of boys sit on the grass while they wait to be picked up”
- Mc Donalds
- Reduced to Clear

### What do you like to do?

- Handball
- Sports – Hockey
- Video games
- Chess
- Electric scooters

### Ideas for in front of School (Featherston St)

- Giant chess board
- Handball courts
- Planters that the boys paint and make
- Exercise equipment
- Pull up bar
- Rubbish bins in front of school
- Seats that look like rocks to match existing rock in Mitre 10 grass
- Boulders as seats
- Seats in mitre 10 grass for students to sit on instead of sitting on the grass
- Bench seats with no backs so people are encouraged to engage in more social interaction
- Cherry blossom trees
- Gardens in the school
- Bush/shrubs with flowers
- EScooter storage (so they are not scattered all over paths)

- LED light strips under the footpath
- Bike ramps along greenspace
- Games
- Raised shelter area

#### Ideas for North Street:

- “It’s depressing walking down here to the bus because it’s grey and cold”
- Art on the wall – students do art, and they could collaborate with professional street artists.
- Make the crossing a proper pedestrian crossing - WSP
- Bus stop – have seating against wall, permanent signage to bus routes – coloured strips on the footpath for wayfinding leading to different bus routes. They raised concerns about bus route changes.
- Pull up bar on the wall by the bus.



## Palmerston North Boys High Student Idea Prioritisation:

Feature	1st priority(Green)	2nd Priority (blue)	3rd priority (yellow)	Total
Exercise equipment	6	1	6	13
Seating	6	4		10
Plants	3	1	2	6
Shelter	1	3	2	6
Crossing with sense of place	3	2	1	6
Chess		3	2	5
Bins		1	3	4
History/storytelling	1			1
Cycle/scooter stands		1		1
Pavement art			1	1



## Workshop 2 – Central Normal School

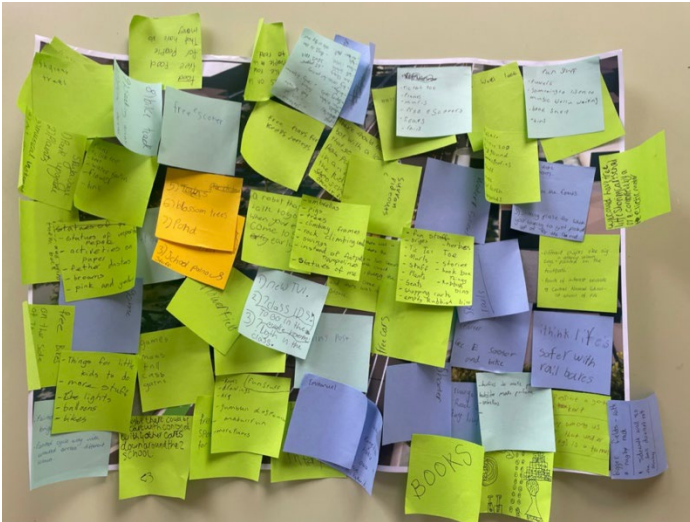


### **Overview:**

Ellen Young from Paper Road facilitated an interactive session with one year 9 class at Central Normal School on the 18th of August.

- During the session the children and teacher were presented to about the project and placemaking. They were asked to provide ideas for stories and themes that were important to them, many of the kids animated talked about the various Māori legends that were relevant to Palmerston North.
- They were asked to give specific ideas about what they would like to see on the street around their school.
- We all went out to the street so the children could get creative by sketching their ideas onto the street and test them.
- It was interesting to note that when asked how the children got to school around 70% of them said they biked.
- The children loved the story of where the large trees of the edge of the Papaioea clearing used to be.

## Results of the workshop:



## Ideas:

### Interactive Features x 24

School piano  
Skateboarding rails  
Books x 6  
Tunnel  
Climbing frames  
Swings  
Trampolines in footpath  
Mini kitchen  
Bridge  
Huts  
Maze x 2  
Tic tac toe x 2  
Hopscotch x 2  
Games x 3  
Musical instruments

### Plants x 13

Plants x 6  
Flowers x 3  
Trees x 2  
Herbs  
Blossom trees

### Artwork x 12

Map of New Zealand on pavement  
Drawings  
Different shapes zig zagging on the footpath  
Statues x 3  
Canvas for painting  
Murals x 2  
Art on the ground

Painted footpath

Cycleway art with video games

### Story Telling and History x 9

Story about an earthquake at the school?  
Story of Haunui crossing and naming many rivers in search of his wife who was abducted  
Story of how the Manawatū River was named  
Points of interest boards showing where trees from the Papaieoa clearing were.  
Stories x 5  
Heartbeat story

### Seating x 8

### Shade x 4

Umbrellas x 3  
shelter

### Bins x 4

### Other Ideas

Electric shopping carts  
Go karts  
Free food for people that have no money  
Robots that you can talk to when you come to school early  
Little zoo  
Pond  
A safe for toys

**Street Opening Celebration Ideas:**

Dress up your bike and cycle to school/work day  
Party at a cafe – Ebony cafe

**Ideas From Chalk Drawing Exercise:**





**Workshop 3 - Wider Stakeholder Group – 23rd August 5pm-7pm**





### Activity 1:

The workshop kicked off with a welcoming and karakia followed by a short presentation about the project and its parameters. The participants were asked to reflect on Palmerston North and Featherston Streets identities and write down themes and stories from the area. They were also asked to write down who the main users of the street were. They were then asked how the street feels now and how they'd like it to feel.

During the presentation local Rangitāne spoke about the history of Palmerston North and narratives related to Featherston Street.

- Art inspired by ancestor Haunui who named the rivers from South Taranaki to Kapiti.
- The idea of a map or journey, this narrative has been told through designs at the airport – this narrative could be extended through the city
- Seed of kowhaiwhai in rivers is a motif at the airport
- Rivers were the highways, Rangitāne travelled along them. Roads are the new version of this. We could think of all modes of transport waka taking us to our destination.

Tables	Themes	users	Feeling of the Street
Boys High Table	Student city  Tribes of rangitāne  Farming background	Students, shoppers, travelling to work in cars and buses	<b>Currently:</b> Barren, slow, congested  <b>Could be:</b> Environmentally friendly, easy quick to travel, inclusive space for all
Mitre 10 reps PNBH principle Business's	High was co-ed and then separated  Central Normal first public swimming pool  Changes of stores business (Mitre 10 was Hockwood) moved here.	Delivery vehicles, emergency vehicles, bus users	<b>Currently:</b> Busy, hectic, congested, industrial, thoroughfare 'route home'  <b>Could Be:</b> Calm, positive busy, green
Local families	Windmills, maungas, awa, eel, iwi connection, history of the 2 oldest schools, businesses	Bus, scooters, bikers, cars, students, shoppers, kids,	<b>Currently:</b> Adventurous, smelly, plain, too many cars , it's scary, it's not fun, its dull looking, busy roads too much traffic  <b>Could Be:</b> More trees and plants, natives, things to play with, better looking, things to do, safer footpaths, smell better, rollercoaster
Mix of council and local residents	Isaac featherston, property, trees has evolved over time . today part of its journey  What is the next part of the journey		<b>Currently:</b> If you choose the right time it does flow, often hard work, people avoid it, kids avoid it. Rear access of school is more busy than front Its a street doesn't do more than that.  <b>Could be:</b> Interesting, romantic, more useful, more active, less worried about security about safety, safer happier
Mix front Rangitane reps and residents	History, māori history, military history,	Some coming specifically for dance, business, schools  Mostly people trying to get through	Want it to be a destination rather than thoroughfare





### Activity 3: Ideas from each table

#### Green Table (Mix of Council and Residents):

- Play in green spaces, and mounted on fences
- Painting along sidewalks
- Shade sales/umbrella/s shelters
- Greenery everywhere!

#### Orange Table (Rangitāne Representatives and mix of community):

- Paint + colour
- Crossings – more colourful
- Junctions are currently horrible and boring – need visibility
- Trees and planters, rotate around the city (so don't have the rooting problem) – e.g 5 years on Featherston and then move them to get planted in the park.
- Colour on fences (outside school etc)

- Mitre 10 grass place to do stuff, use it, plant bigger trees, seating, tables, kids obstacle course, monkey bars
- Jangle on the fence or padlock on the fences etc – somewhere for memorabilia
- Drinking fountains – reduces fizzy drinks
- Public toilets – future scope
- By the dump is a resource recovery centre – recycled stuff, could go get some interesting antiques (old machinery) paint it up, talking point, put it on side of road, seat bench next to it.

#### **Yellow table (Local Families):**

- Boulder play along the wall on North Street – one end to the other without touching the ground
- 4 square on footpath
- Led seating by bus stops
- Grass area – interactive seating, grandstand seating
- Interactive tuku tuku panel (like in Whanganui outside the museum) – create your own bits of art and people can recreate and add
- Okatia – seat that is in shape of the Totara tree Okatia occupied, the bottom is spring (story of how manawatū gorge was created) – creates the movement of the character in the story.
- Painted footpath as sprint track with a speedometer (like speed ones that measure the speed of a car) and it measures speed of people (try run and walk along it)
- Maori games (taonga tākaro) mini nature trails
- Parklets near businesses opposite Central Normal School
- Bike scooter pump tracks
- Interactive sensory walls
- Chalk art, pedestrian crossing art

#### **Light blue table (Mitre 10 Reps, PNBH Principal, businesses):**

- Artwork on footpath for central normal
- New bus shelters going in - could do gardens around them.
- Stories in the footpath
- Murals/art on blank walls outside boys high
- Gardens crossings median strips
- Bus shelters Featherston St
- Giant planter boxes – watching shape of tree, narrow so not in the way.
- Mural, bus shelters, wider footpaths

#### **Dark blue table (Palmerston North Boys High School Boys):**

- Aroha st – incorporate street name (love, heart etc)
- Benches
- North st – timeline of boys history along the wall, walk past that wall, see history on way to school
- Central normal – variety with trees and greenery
- Murals of central normal
- Plamy boys – green area – exercise equipment, boys would use it
- Giant chess board – boys are really into it
- Safety – bus shelters, general planting greenery
- Escooter storage because they are chucked around
- Crossing around side street, dangerous for boys crossing road
- Rubbish bins Featherston street outside school



**Concerns:**

- We need a way to get boys students to move on not move around (grass verge – H&S hazard, more you put there to have them hang around, it will get ruined in a second) – trees cool but not a jungle gym
- Cyclists and buses – blind spots (if increasing – e.g. blind spots of buses for cycleway)
- Already experienced elsewhere in the city

**Priorities:**

Feature	Examples/ideas	1st priority(Green)	2nd Priority (blue)	3rd priority (yellow)	Total
<b>Art</b>	Murals at mcds Public history mural NBHS history mural North st Māori Aroha proverbs on Aroha st Love/aroha sculpture on Aroha st Maori patterns outside schools/bus stops Brighten school fences Banners Recycled sculptures Mount pictures on fence	19	1	2	22
<b>Pavement art</b>	Hopscotch Pavement art on aroa st Dance steps on footpath	5	1	1	7

	Fairytales on pavement by central normal Brighten school paths				
<b>Exercise equipment</b>	Bouldering wall North St	6			6
<b>Crossings</b>	Ngata st crossing Flashing lights on pedestrian crossing	4	1		5
<b>Seating</b>	-seats for bus -seating outside Just Zilch -along noth st wall	2	2		4
<b>Plants</b>	Hanging flowers planter boxes Plantings outside buildings	4			4
<b>Bins</b>			1	3	4
<b>Water fountains</b>	Water fountains	4			4
<b>Musical instrument</b>	Musical instruments	1	2		3
<b>games</b>	Giant chess Māori games along Aroha st	2			2
<b>Ramps</b>	Bike ramps/scooter ramps outside central normal	2			2
<b>History/story telling</b>		1			1
<b>Cycle/scooter stands</b>	Escooter storage			1	1
<b>Shelter</b>	On grass in front of mitre 10	1			1

## Separate Engagement –

**Paper Road engaged separately with the following groups that were unable to attend the workshop:**

### **Mitre 10 Management:**

They were keen on more planting and quality placemaking. They would like to see limited development on the grass space between Mitre 10 and PNBH but were happy with infomal seating and low planting.

### **Brian from Ebony Coffee:**

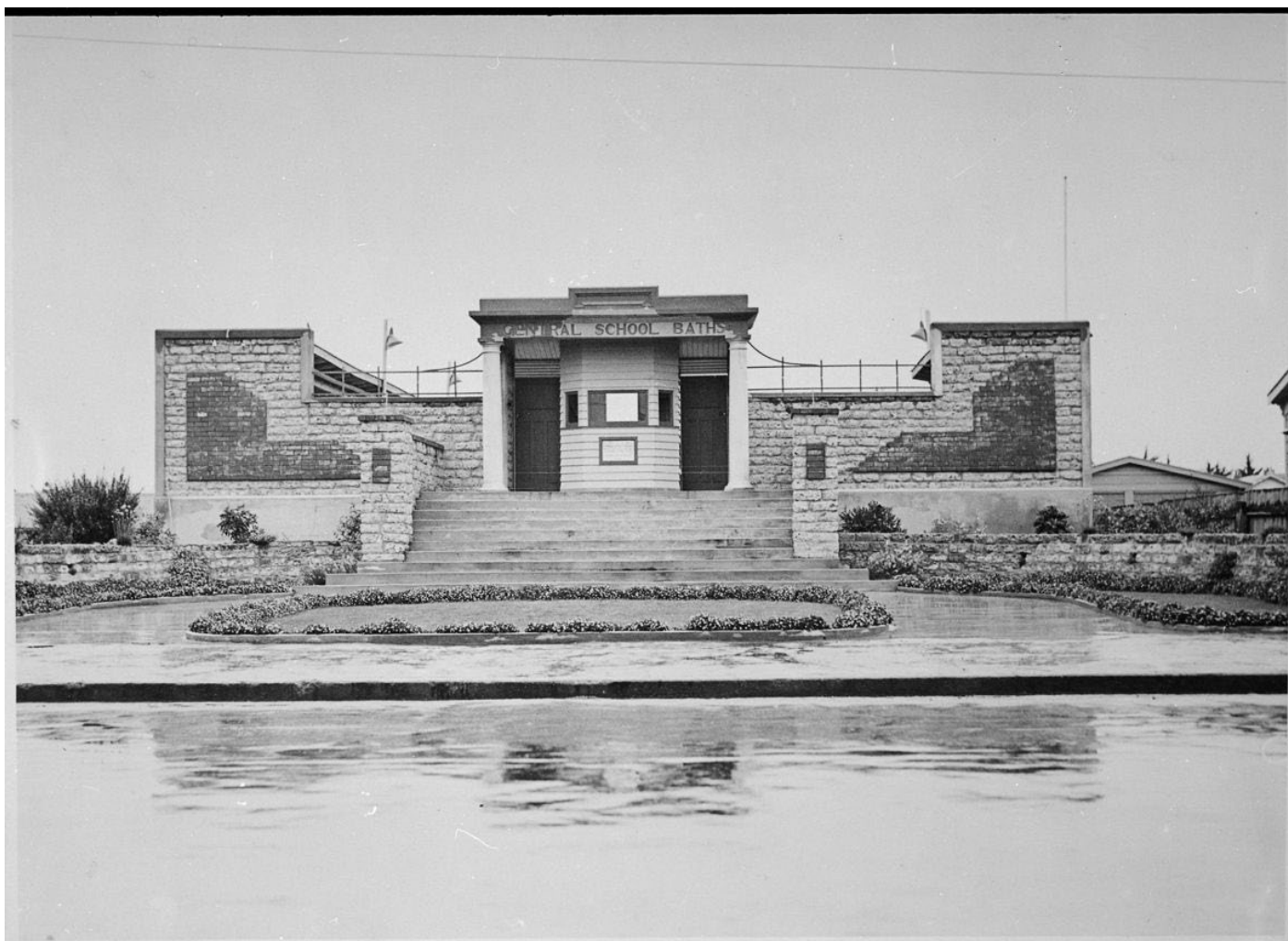
He would love a bike rack outside his business and a mural on his fence. This location suits these features as it is part of the village area across the road from one of Featherston Streets key communities – Central Normal School

## Meaningful Stories

Stories that are meaningful to the community that could be included in the design art work and signage:

1. Meaning of Manawatū  
Recognising this story on the aptly named Aroha St would be a lovely connection:
2. The story of the formation of the Manuwatū Gorge
3. History of the two oldest schools in Palmerston North – PNBH and Central Normal School

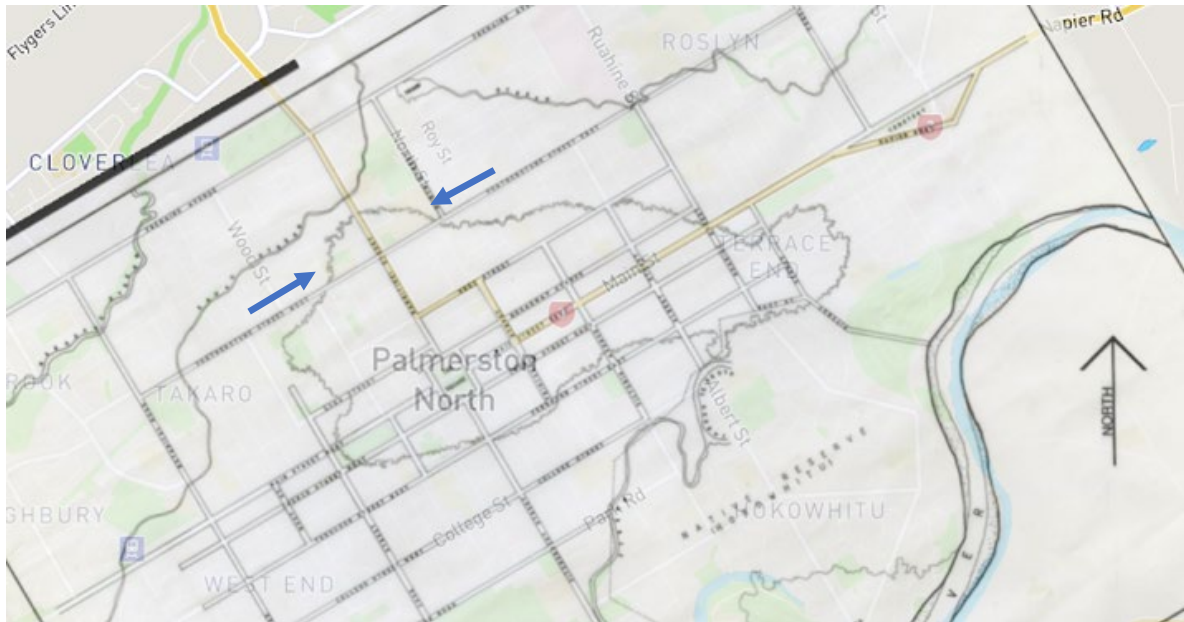
These schools have a rich history of the significant achievements of old boys many having served gallantly in the 1st and 2nd world wars. Central Normal School was also the site of the first pools in Palmerston North:



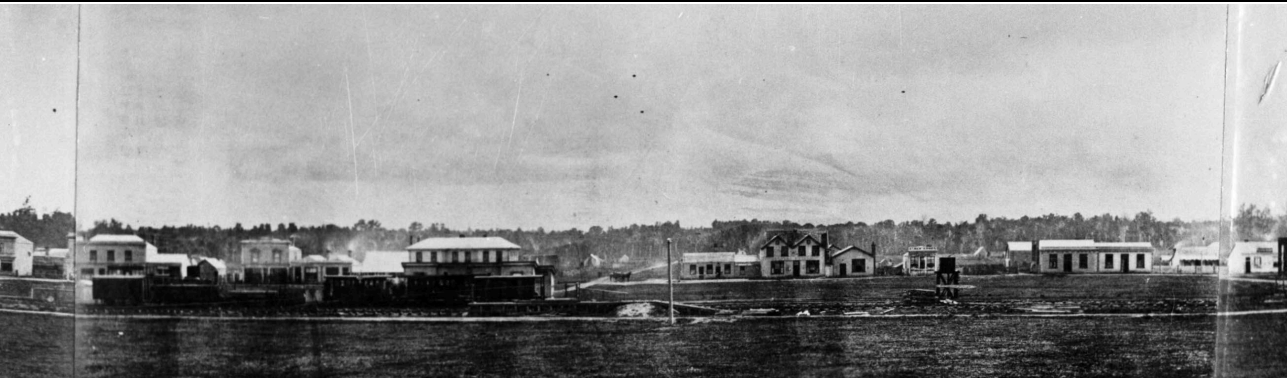
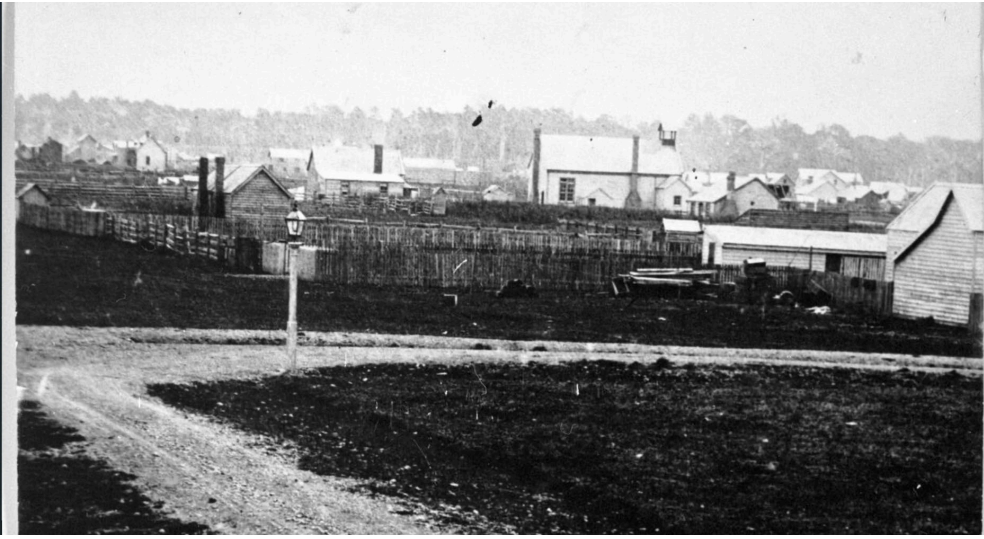


#### 4. Original Tree Line of Papaieoa Clearing:

The section of Palmerston North that placemaking is proposed lines up exactly where the tree line was originally at the opening of the Papaieoa Clearing. The below map shows that the treeline hugged both of the schools on Featherston Street:



The below images show the tree line in the distance above the buildings of the early settlers:



## Next Steps

Paper Road is in the process of creating a placemaking plan and design alongside WSP that reflects the outcomes of this document. There is limited scope to imbed all ideas into the design as there are budget constraints and other practical considerations such as maintenance and spatial limitations. But our priority will be to create a design that the community can see their voice and identity present while ensuring what is delivered is quality. Our design will incorporate clear rationale for the design decisions related to this document.

Once the designs are created we will go back to the community for feedback and refinement of designs and discuss with PNCC best methodology for delivery.

