

Recycling Plastic in Palmy

When you buy something in plastic, it should have a triangle with a number on the bottom. This indicates what type of plastic it is, and helps us to determine what can and can't be recycled. **In Palmy, we can recycle 1, 2, and 5.**



Can recycle:



Remember to rinse these items out before you put them in your recycling bin.



- fruit and vege punnets
- some soft drinks and water bottles
- harder plastic containers that hold spreads like peanut butter and mayonnaise



- milk bottles
- juice bottles
- shampoo bottles
- some cleaning product bottles



- some takeaway containers
- plastic cutlery
- 2L ice cream containers
- medicine bottles
- 1L yoghurt tubs



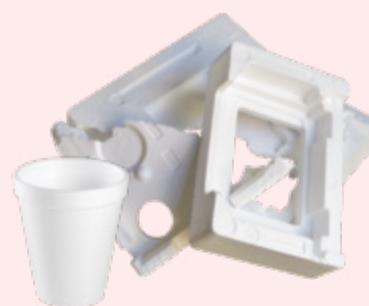
Can't recycle:



- Soft plastics and plastic bags
- Lids and bottle tops
- Small yoghurt, sour cream
- Polystyrene
- Medical Waste
- Some big cleaning bottles with sturdy handles



- Some squeezy sauce containers
- Some takeaway containers
- Battery packaging
- Electronic packaging



Not sure if you can recycle it? Visit pncc.govt.nz/rubbishandrecycling